

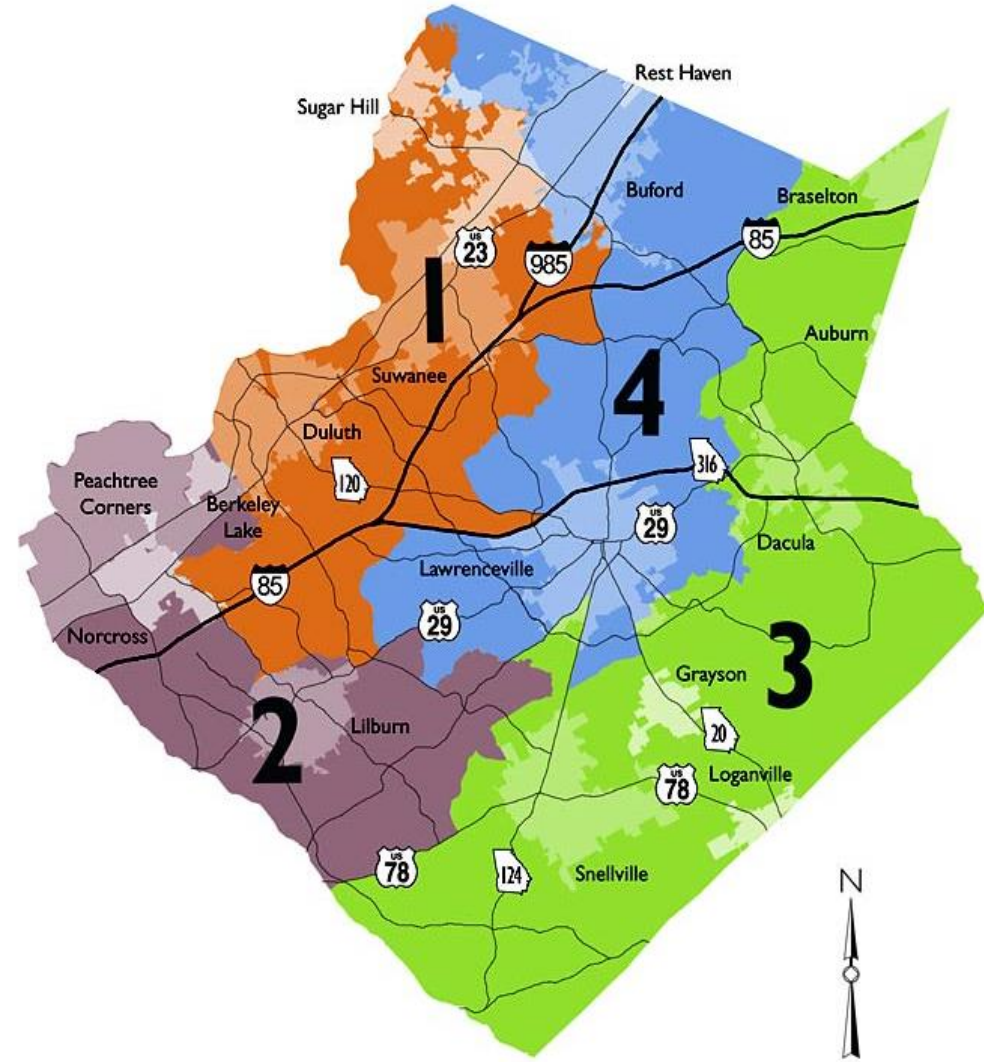


City of Lilburn

Small Town, Big Difference

About Lilburn

- ❑ 13,500 residents
- ❑ 7 square miles
- ❑ Mix of established & new neighborhoods
- ❑ Great schools
- ❑ Lots of parks
- ❑ Proximity to Atlanta
- ❑ Growing Downtown district







Main Street Realignment

City of Lilburn

Completed May 2015





Strategic Relocations

City Hall, Lilburn Police Department and Municipal Court
have moved!



Lilburn City Hall - Library

City of Lilburn • Gwinnett County • Gwinnett County Public Library – Completed October 2016





New Police Headquarters!

Moved to new location at 4600 Lawrenceville Highway



Small town. Big difference.



Old Town Neighborhood



Lilburn City Park

New playground with separate toddler area opened in 2019!



Lilburn City Park

New restroom building and parking lot in 2019



Lilburn City Park

Coming soon - New open air pavilion! Approximately 3,000 square feet with restrooms .



Camp Creek Greenway

4.2 miles of paved trail and boardwalk





Permatrek project

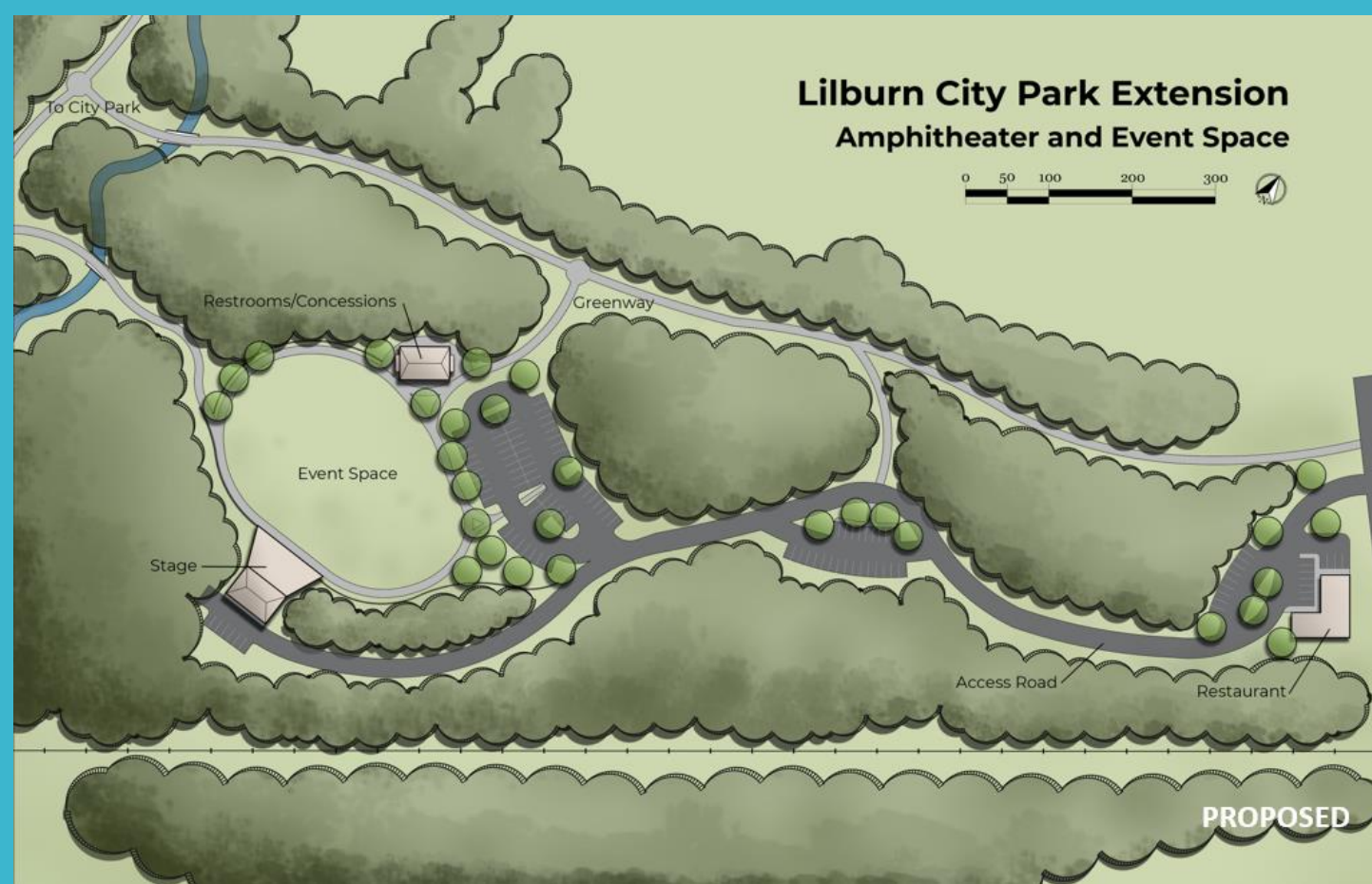
2018 - Longest PermaTrak project in the country that is supported on the helical pier foundation system.

Complete replacement to Permatrek over next 2.5 years





City Park Expansion



City Park Expansion

City Park Expansion



City Park Expansion

City Park Expansion



City Park Expansion

Old Town Restaurants

1910 Public House

This burger was voted the best in Atlanta
| Best of Atlanta

Jen West - For the AJC
11:10 a.m. Monday, Feb. 13, 2017 Filed in Things to Do in Atlanta



Old Town Restaurants



Old Town Businesses

AJC.com

NEWS SPORTS NEIGHBORHOODS LIFE THINGS TO DO BLOGS MORE

Gwinnett County is getting its first distillery

Yvonne Zusel

Gwinnett County is getting its first distillery

© April 26, 2016 | Filed in: [Ajc-features](#); [local news](#), [atlanta-neighborhoods.ajc](#), [cocktails](#), [food.ajc](#), [Gwinnett County](#), [Restaurants](#), [Restaurants & Dining](#), [things-to-do.ajc](#), [Yvonne Zusel](#).



Paul Allen and Betsey Dahlberg at Hope Spring Distillery, opening this summer in Lilburn. / Photo credit: Margery Kellar

Around the time most of their peers are spending their days at the golf club or at the pool in the name of a relaxing retirement, Paul Allen and Betsey Dahlberg are embarking on an undertaking that might give people half their age pause — they're building the first distillery in Gwinnett County.

The husband and wife are set to open Hope Springs Distillery at 4839 Railroad Ave. NW in

Lilburn this summer. Named for the 50-acre farm Dahlberg's family lived on in Stone Mountain when she was growing up, the distillery has been in the works for about three years.



Antiques in Old Town

Old Town Businesses



Old Town Businesses

Music on Main Street (MOMS)



Old Town Businesses

Citizen Exchange





Cottages at Noble Village

55+ Active Adult Community





Old Town Lilburn Townhomes

9 homes complete and sold

11 under construction

55 Total Townhomes



Lilburn Township

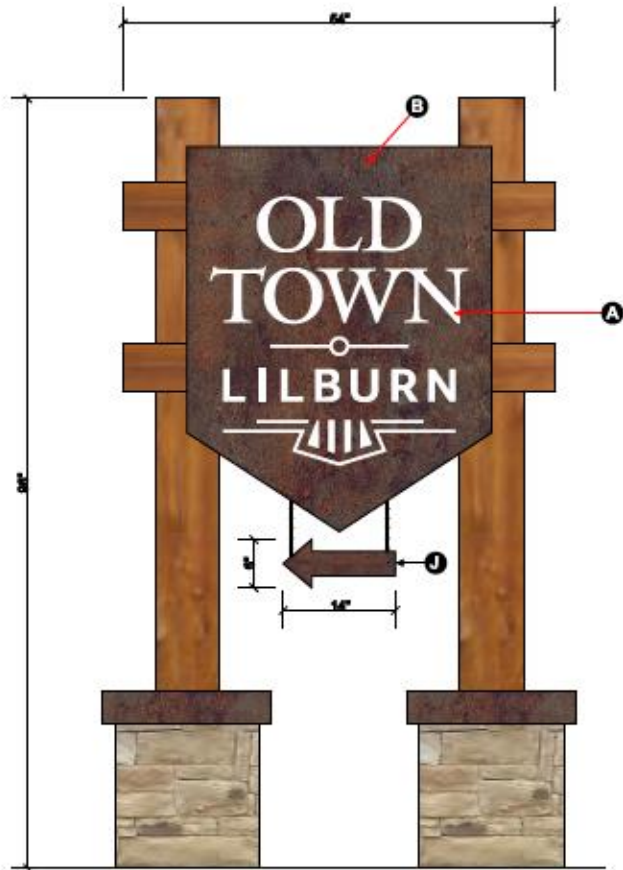
81 Townhomes

15,000 sq ft - Commercial

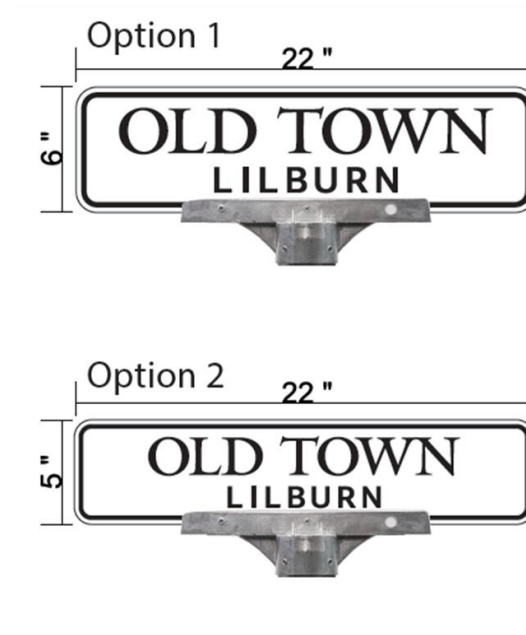
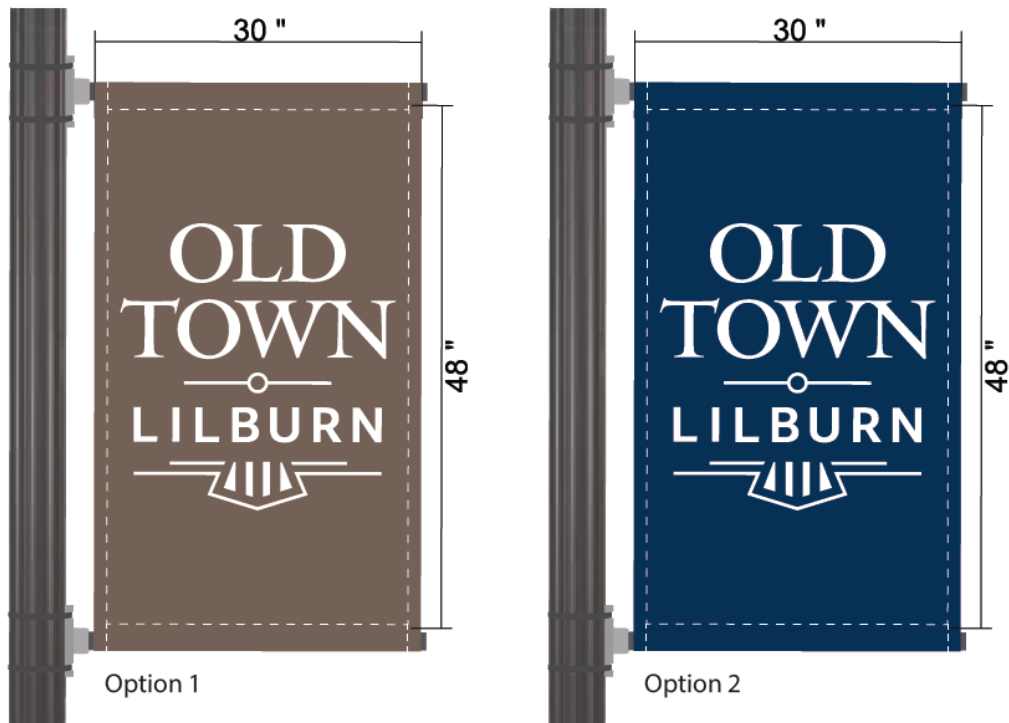
“Old is New” - Placebranding



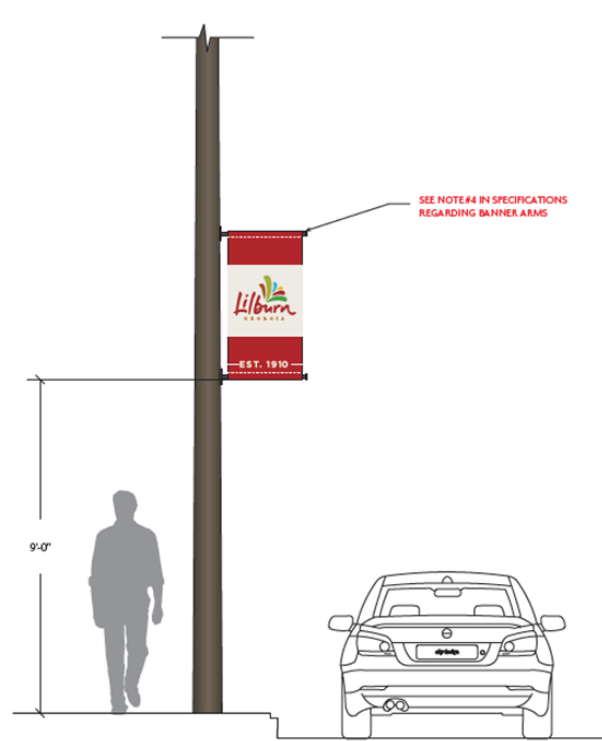
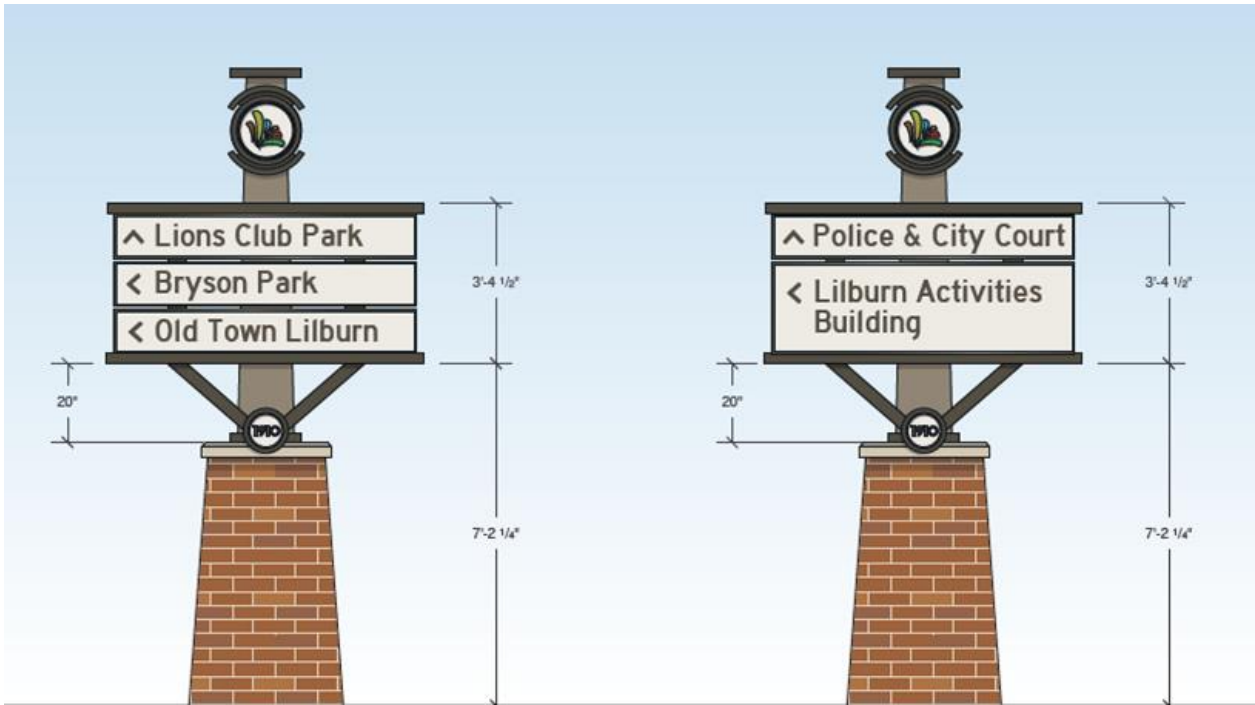
Old Town Wayfinding



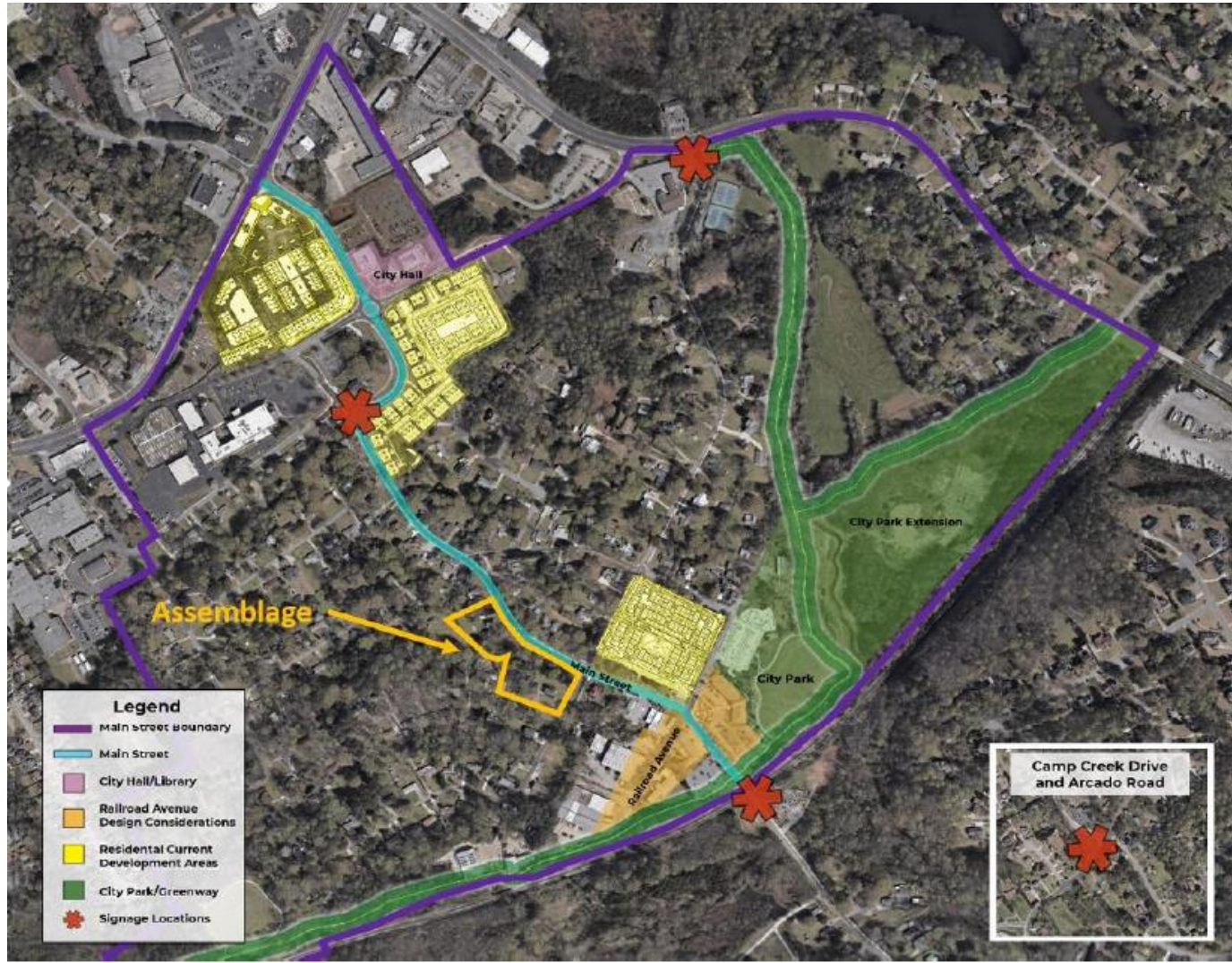
Old Town Wayfinding



Lawrenceville Hwy Wayfinding



Main Street Assemblage



Main Street Assemblage

REQUEST FOR PROPOSAL

Notice of development partnership opportunity with
the Lilburn Downtown Development Authority



For the mixed-use development of
First and Main in Old Town

Brewery - 57 Railroad Avenue

REQUEST FOR PROPOSAL
Notice of development partnership opportunity
with the Lilburn Downtown Development Authority



for the redevelopment of a light industrial
building into a brewery in Old Town



Brewery – 57 Railroad Avenue



Brewery – 57 Railroad Avenue



Transformation of Railroad Ave



Existing

Transformation of Railroad Ave



Transformation of Railroad Ave



Transformation of Railroad Ave



Transformation of Railroad Ave



Transformation of Railroad Ave



Lilburn IS HIP

COME SEE WHY



Let's Connect!

Brian Burchik

Community Development Admin & PIO

Bburchik@cityoflilburn.com

404-368-2584



Small town. Big difference.